



IMAGE ST/STE/STEI/STEII AIR PURGE

Description: How to properly clear any air from the ink lines that are after the Sub Tank.

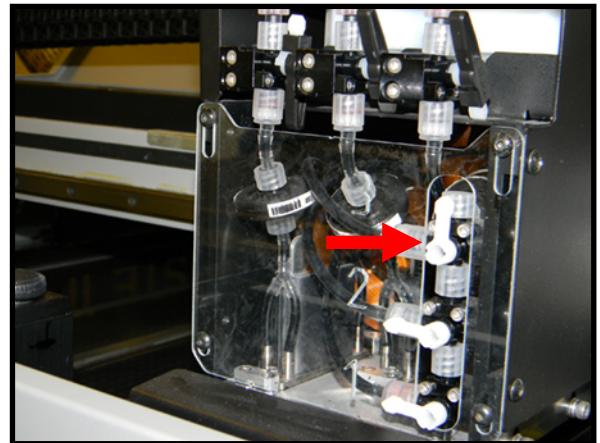
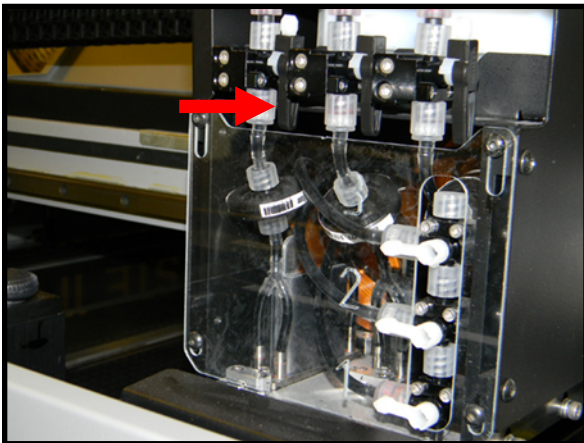
Source: MZ – 2/9/16

From time to time the ink lines, after the sub tank, may get air bubbles or pockets in them. This can lead to poor nozzle checks as well as poor image quality. When this happens, the air must be cleared from the ink lines to obtain a proper print.

1)
Leave the top row of manual 3 way valves in Position #3 (The black tip pointed straight down). In this position ink will be able to flow from the sub tank through the ink lines.

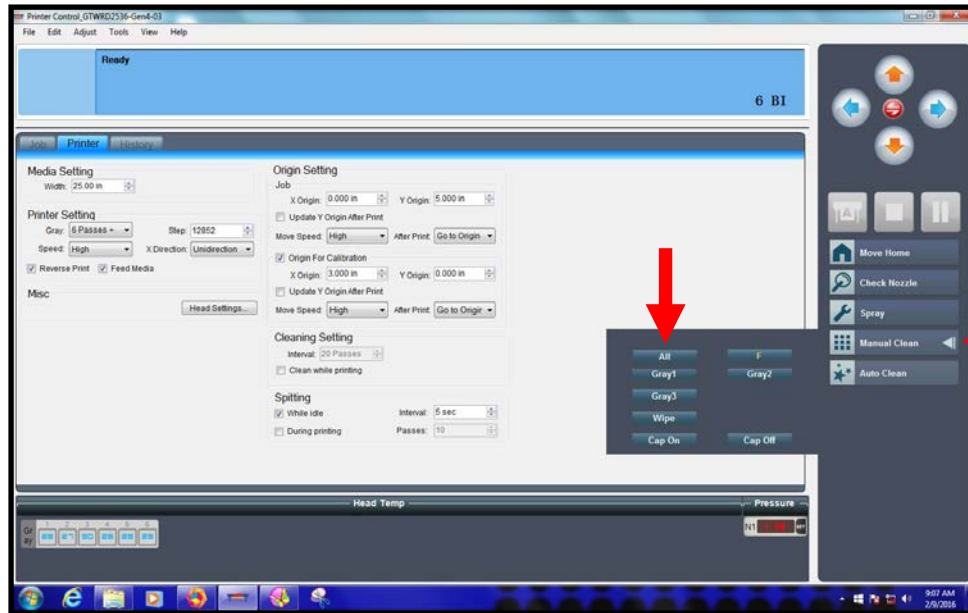
Take the bottom column of valves and locate the number the specific channel that you are working with; Print Head 1, Print Head 2 or Print Head 3. Take that valve that corresponds with the channel you need to clear of air, turn this valve to the 12:00 (12 o'Clock) position.

(NOTE: If you are working with more than one channel, you can only work on one channel at a time.)



2)

Open the Print Control Screen (PCS) then click on the MANUAL CLEAN tab.
Locate the ALL option.



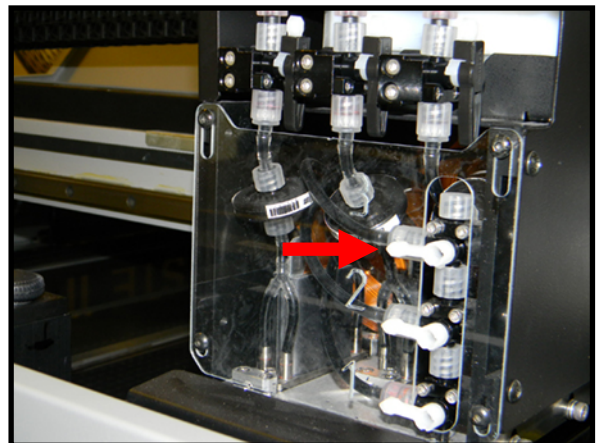
Click the ALL option for only 5 seconds. Do not go past 5 seconds.

If the air is still present, please repeat by holding down ALL for 5 seconds.

(NOTE: You must make sure the sub tank has filled for you to continue after the first 5 seconds.)

If the air has been evacuated from the ink line, turn the bottom valve back to the 9:00 (9 o'Clock) position.

Repeat this for any remaining ink lines that have air in them.



3)

Once you are completed, make sure the top row of valves are ALL in Position #3 (The black tip pointed straight down).
The bottom column of valves are ALL pointed to the 9:00 (9 o'Clock).

Run 2 Auto Cleans

Run a Nozzle Check to assure the print heads are printing properly.

